

A man is captured mid-jump on a playground structure consisting of vertical poles and horizontal rings. The scene is set on a sandy beach at sunset, with a large apartment building visible in the background. The sky is a warm orange, and the sand is textured with footprints. The overall mood is serene and active.

NATE
PHOTOGRAPHIC

E-Chrome

Installation Guide

Mac

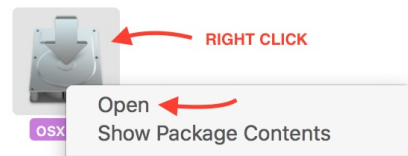


Simply run the included installer

(it will add everything except LR Mobile Presets)

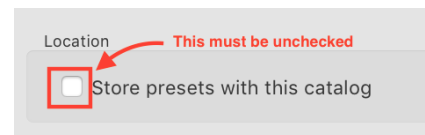
Unknown Developer Error?

Right-click the installer and select "Open." Then confirm you want to open.



Presets Not Showing?

Go to *Lightroom > Preferences > Presets*. Uncheck "Store presets with catalog" and try installation again.



Other issues? Please follow the instructions on the following pages to install manually.

Windows

Install files manually
(scroll down for instructions)

How to Install Manually

1. **Install Camera Profiles**
2. **Install XMP Settings** (LR 7.3+ and ACR 10.3+)
3. **Install Develop Presets** (LR 7.2 and earlier)
4. **Sync LR Mobile Presets**

1

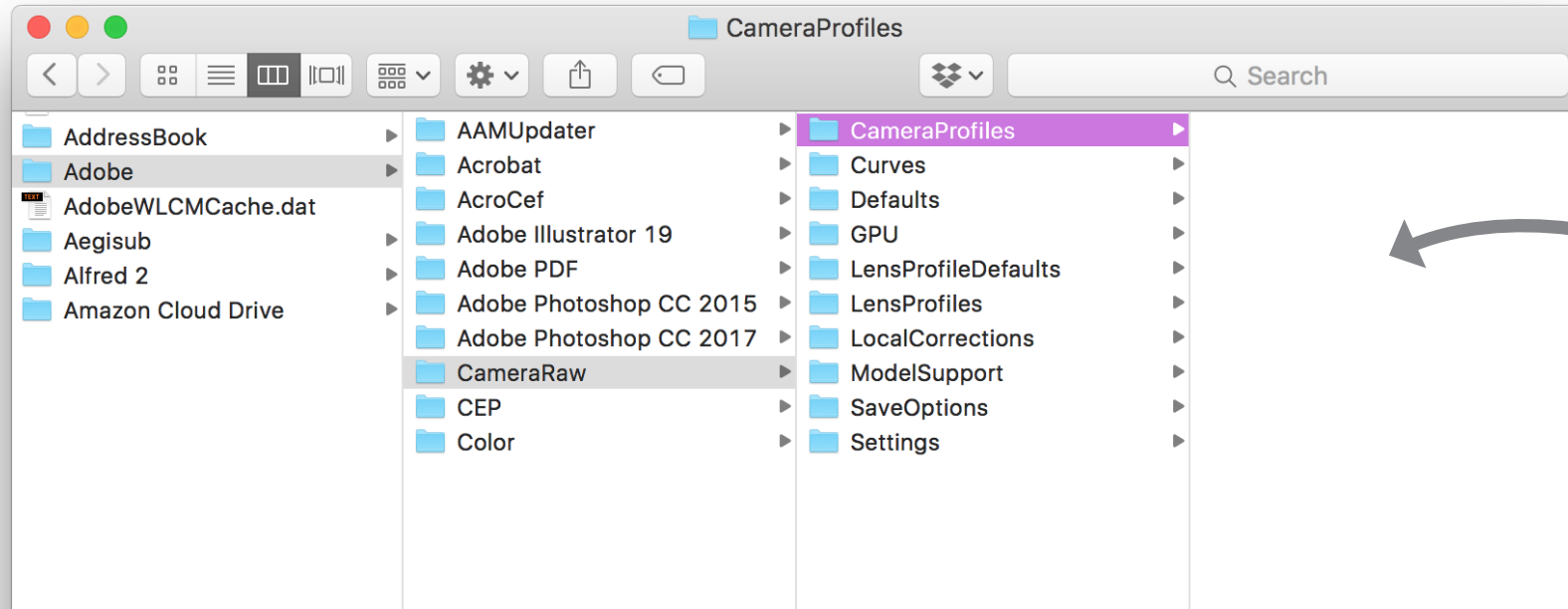
Install Camera Profiles

Copy the folder "NATE Cam - Camera Profiles" from your E-Chrome download to the following

WINDOWS: C:\Users\User\AppData\Roaming\Adobe\CameraRaw\CameraProfiles

MAC: Users/{User}/Library/Application Support/Adobe/CameraRaw/CameraProfiles

NOTE: To locate your user library on Mac, open Finder. Then hold down the Option key and select "Library" from the Go menu



NATE Cam
Camera Profiles

2

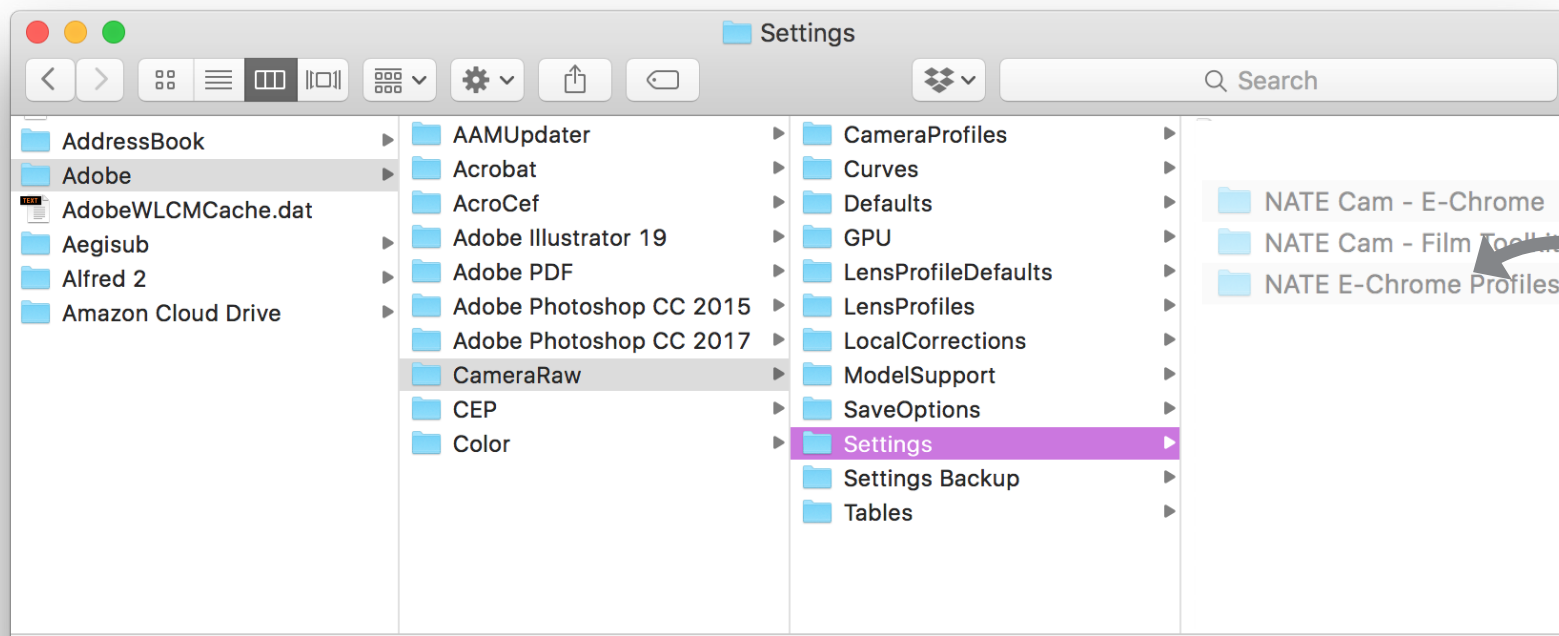
Install XMP Settings

FOR LIGHTROOM CLASSIC 7.3+ & ACR 10.3+

Copy the folders inside NATE XMP Settings (preserving folder structure) to the following location:

WINDOWS: C:\Users\User\AppData\Roaming\Adobe\CameraRaw\Settings

MAC: Users/{User}/Library/Application Support/Adobe/CameraRaw/Settings



E-Chrome / XMP Settings /

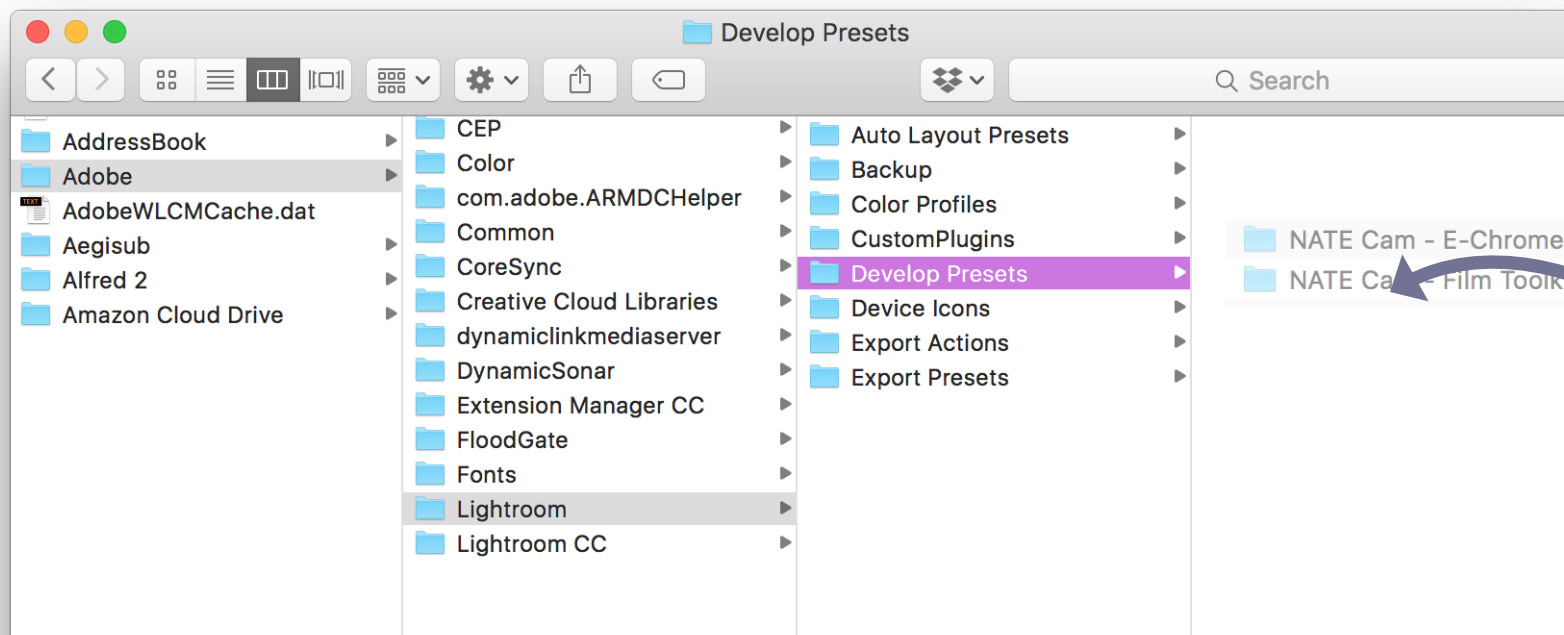
NATE Cam - E-Chrome
NATE Cam - Film Toolkit
NATE E-Chrome Profiles

3

Install Develop Presets

FOR LIGHTROOM VERSIONS 7.2 & EARLIER

1. Launch Adobe Lightroom
2. Open Preferences / Presets and click "Show Lightroom Preset Folder". In the resulting window, select the "Develop Presets" folder
3. Copy the E-Chrome Develop Presets folders (preserving folder structure) into your Lightroom / Develop Presets folder



E-Chrome / Develop Presets /



4

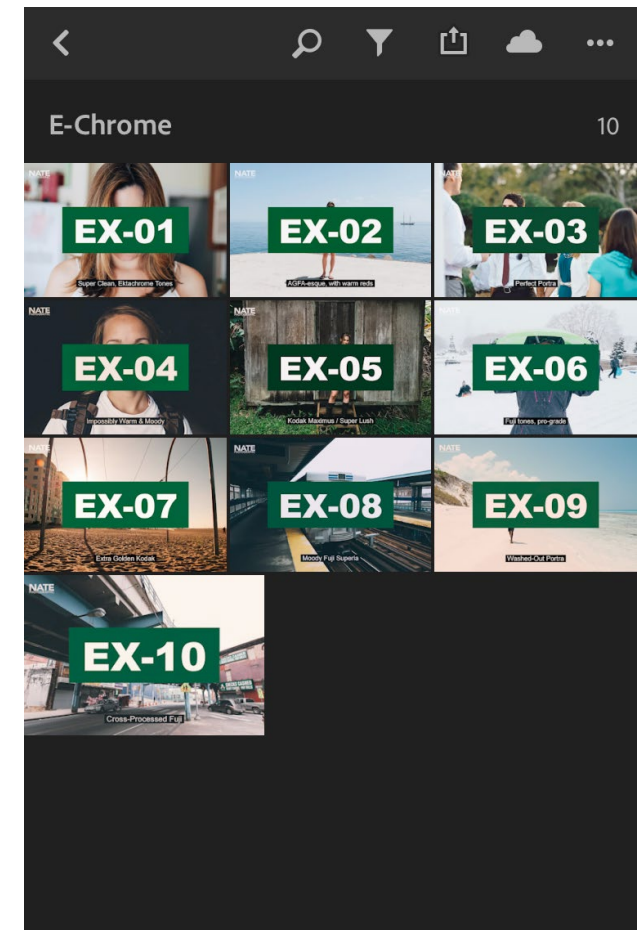
Sync LR Mobile “Presets”

This package includes JPEGs embedded with preset settings. They can be used inside LR Mobile, where you can copy/paste the effects onto other photos.

1. Import the files from the “E-Chrome / LR Mobile Settings” folder into Lightroom.
2. Once imported, select the files in Lightroom’s Library module.
3. On the left pane, create a new Collection by hitting the “+” next to the Collection tab and selecting “Create Collection”
4. Name this collection “E-Chrome” and make sure to select both “Included Selected Photos” and “Sync with Lightroom CC”

NOTE: You will need to have Lightroom CC syncing enabled

5. Open up Lightroom CC Mobile. To use, just copy the settings from a preset, then paste it on any image.



A person is captured mid-swing on a rope at a beach park during sunset. The person is wearing a grey t-shirt and dark shorts, and is holding onto a metal ring. The background features a sandy beach, a row of palm trees, and a multi-story building on the left. The sky is a warm orange color, and the sun is visible on the far left, creating a lens flare effect. The overall mood is relaxed and joyful.

Enjoy!

#echrome
#natecam

nate@natephotographic.com