



**NATE**  
PHOTOGRAPHIC

# X-Chrome

Installation Guide

# Mac

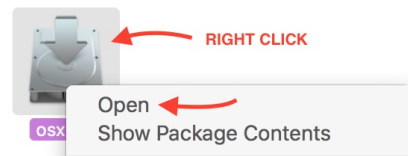


## Simply run the included installer

(it will add everything except LR Mobile Presets)

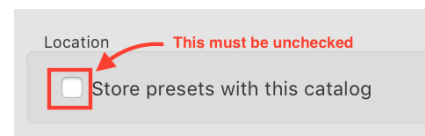
### Unknown Developer Error?

Right-click the installer and select "Open." Then confirm you want to open.



### Presets Not Showing?

Go to *Lightroom > Preferences > Presets*. Uncheck "Store presets with catalog" and try installation again.



**Other issues?** Please follow the instructions on the following pages to install manually.

# Windows

**Install files manually**  
(scroll down for instructions)

# How to Install Manually

1. **Install Camera Profiles**
2. **Install XMP Settings** (LR 7.3+ and ACR 10.3+)
3. **Install Develop Presets** (LR 7.2 and earlier)
4. **Sync LR Mobile Presets**

# 1

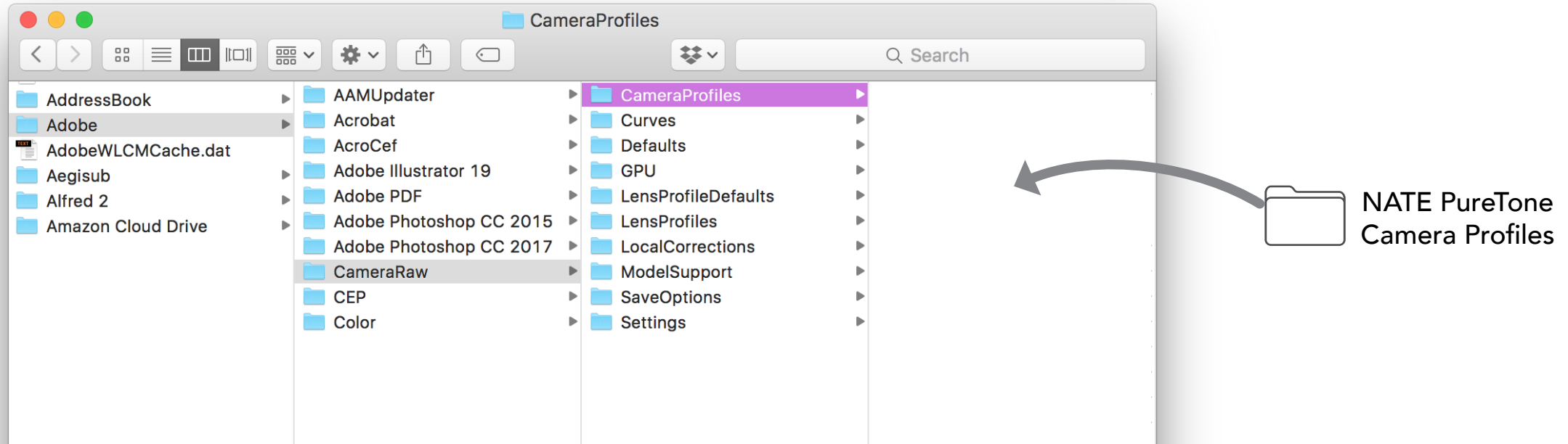
## Install Camera Profiles

Copy the folder "NATE PureTone Camera Profiles" to the following location:

WINDOWS: C:\Users\User\AppData\Roaming\Adobe\CameraRaw\CameraProfiles

MAC: Users/{User}/Library/Application Support/Adobe/CameraRaw/CameraProfiles

*NOTE: To locate your user library on Mac, open Finder. Then hold down the Option key and select "Library" from the Go menu*



# 2

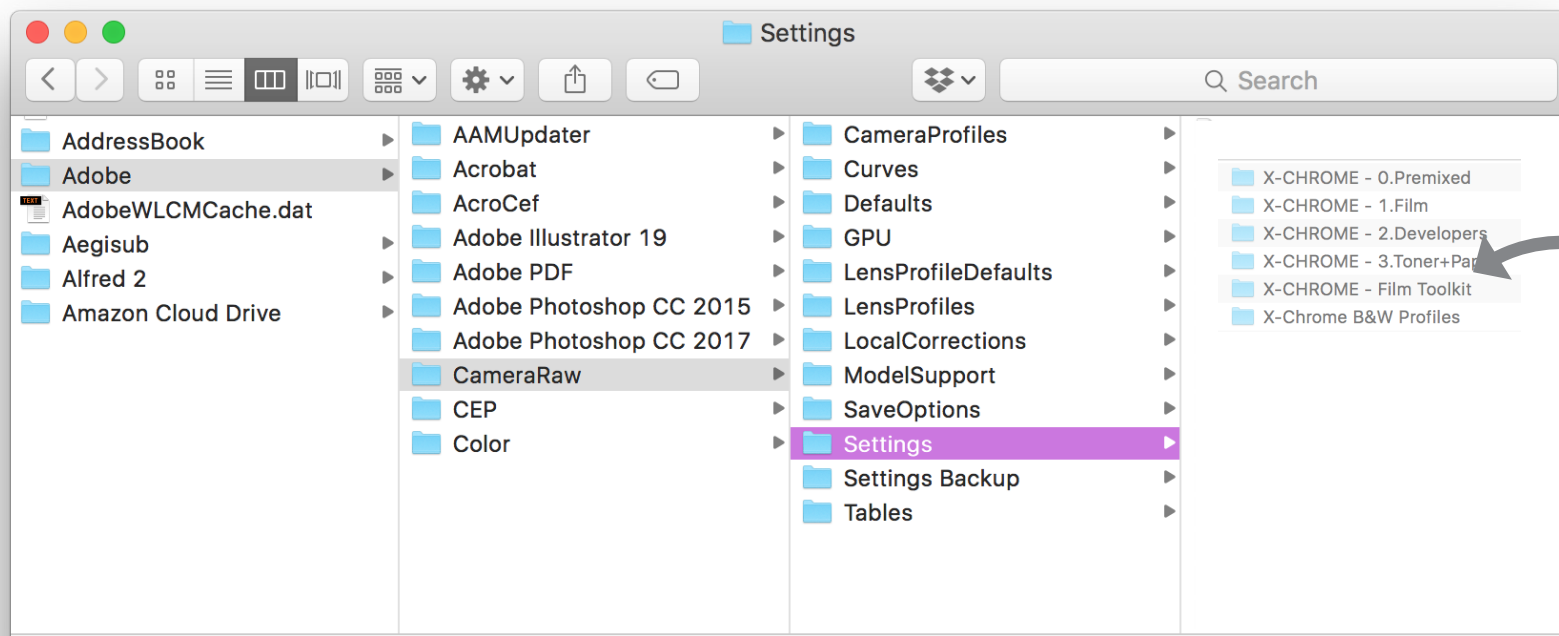
## Install XMP Settings

FOR LIGHTROOM CLASSIC 7.3+ & ACR 10.3+

Copy the folders inside NATE XMP Settings (preserving folder structure) to the following location:

WINDOWS: C:\Users\User\AppData\Roaming\Adobe\CameraRaw\Settings

MAC: Users/{User}/Library/Application Support/Adobe/CameraRaw/Settings



X-Chrome / XMP Settings /

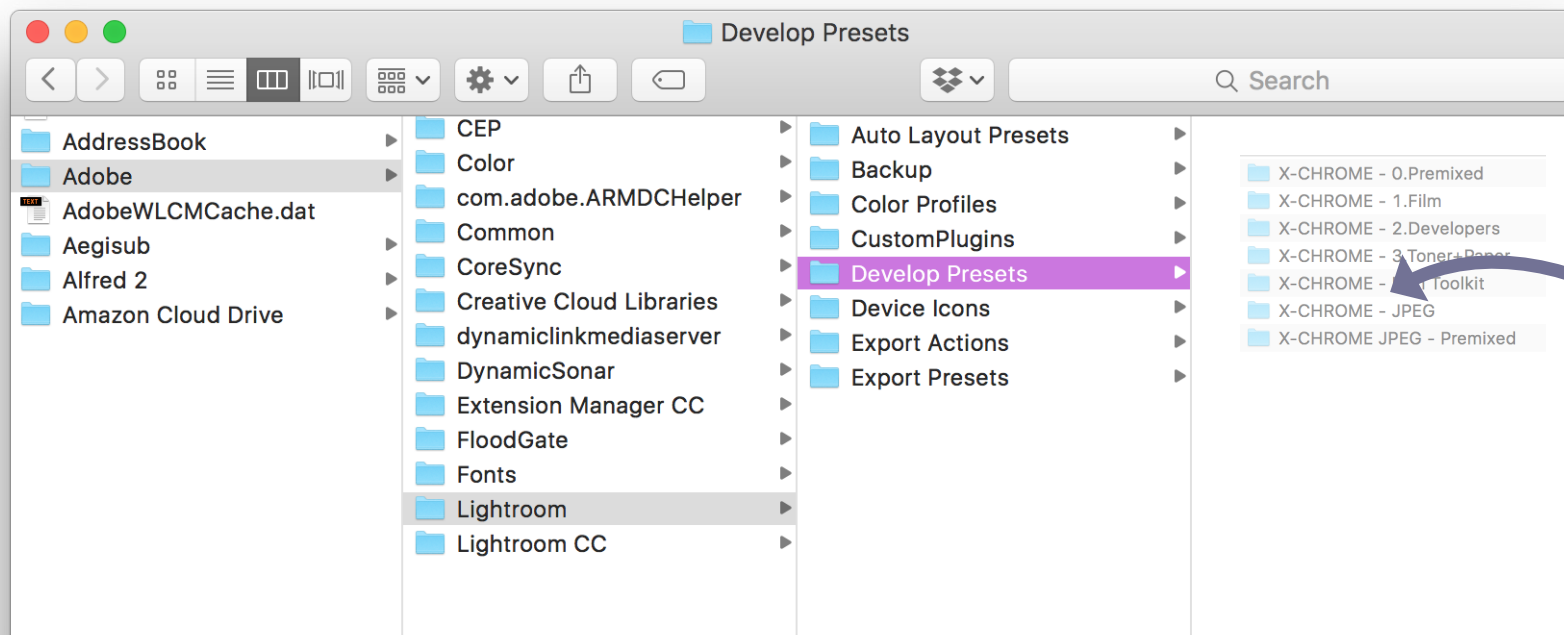
- X-CHROME - 0.Premixed
- X-CHROME - 1.Film
- X-CHROME - 2.Developers
- X-CHROME - 3.Toner+Paper
- X-CHROME - Film Toolkit
- X-Chrome B&W Profiles

# 3

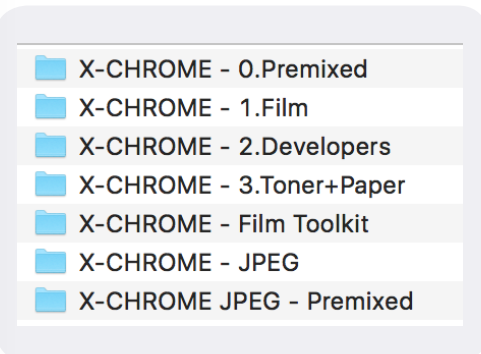
## Install Develop Presets

FOR LIGHTROOM VERSIONS 7.2 & EARLIER

1. Launch Adobe Lightroom
2. Open Preferences / Presets and click "Show Lightroom Preset Folder". In the resulting window, select the "Develop Presets" folder
3. Copy the X-Chrome Develop Presets folders (preserving folder structure) into your Lightroom / Develop Presets folder



X-Chrome / Develop Presets /



# 4

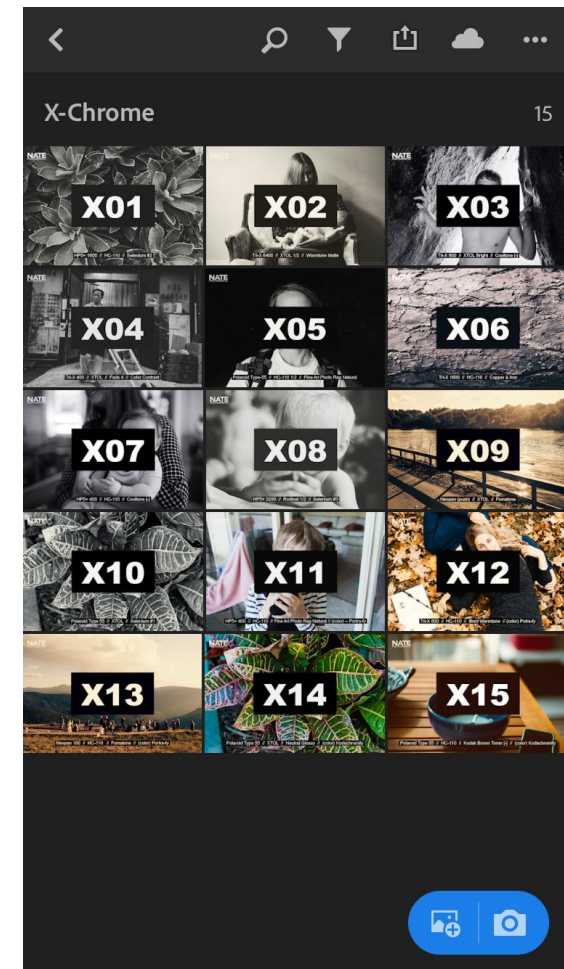
## Sync LR Mobile “Presets”

This package includes JPEGs embedded with preset settings. They can be used inside LR Mobile, where you can copy/paste the effects onto other photos.

1. Import the files from the “X-Chrome / LR Mobile Settings” folder into Lightroom.
2. Once imported, select the files in Lightroom’s Library module.
3. On the left pane, create a new Collection by hitting the “+” next to the Collection tab and selecting “Create Collection”
4. Name this collection “X-Chrome” and make sure to select both “Included Selected Photos” and “Sync with Lightroom CC”

**NOTE:** You will need to have Lightroom CC syncing enabled

5. Open up Lightroom CC Mobile. To use, just copy the settings from a preset, then paste it on any image.





# Enjoy!

#xchrome

[nate@natephotographic.com](mailto:nate@natephotographic.com)